

Light is OSRAM

OSRAM

OT FIT 60/220-240/12 P

Benefits

Small housing design for target application installation.
Versatile scope of application due to output power range of up to 60W.
Robust and durable design for outdoor application.

Applications

Signage lighting, channel letter lighting, backlighting, etc...
Suitable for indoor and outdoor SELV installations

Approvals



L	157 mm
L1	153 mm
B	53 mm
H	31,5 mm

In preparation, if not already printed on product label

Product Features

- Suitable for Class I/II luminaire
- SELV, V_{out}: 12,5 V
- Wide t_a range -40°C ... +70°C
- Driver with output power range of up to 60 W
- High efficiency up to 87%
- Smart Power Supply
- THD<5% at full load
- High IP protection (IP66 / IP67)
- High surge protection: up to 6 kV (L-N) / 6 kV (L/N-PE)
- Mains voltage: 220 – 240 V_{AC}
- Overload protection
- Over temperature protection
- Short circuit protection
- 50'000 h lifetime at t_c 80°C
- 5 years guarantee*

*10% cumulated failure

Electrical specification

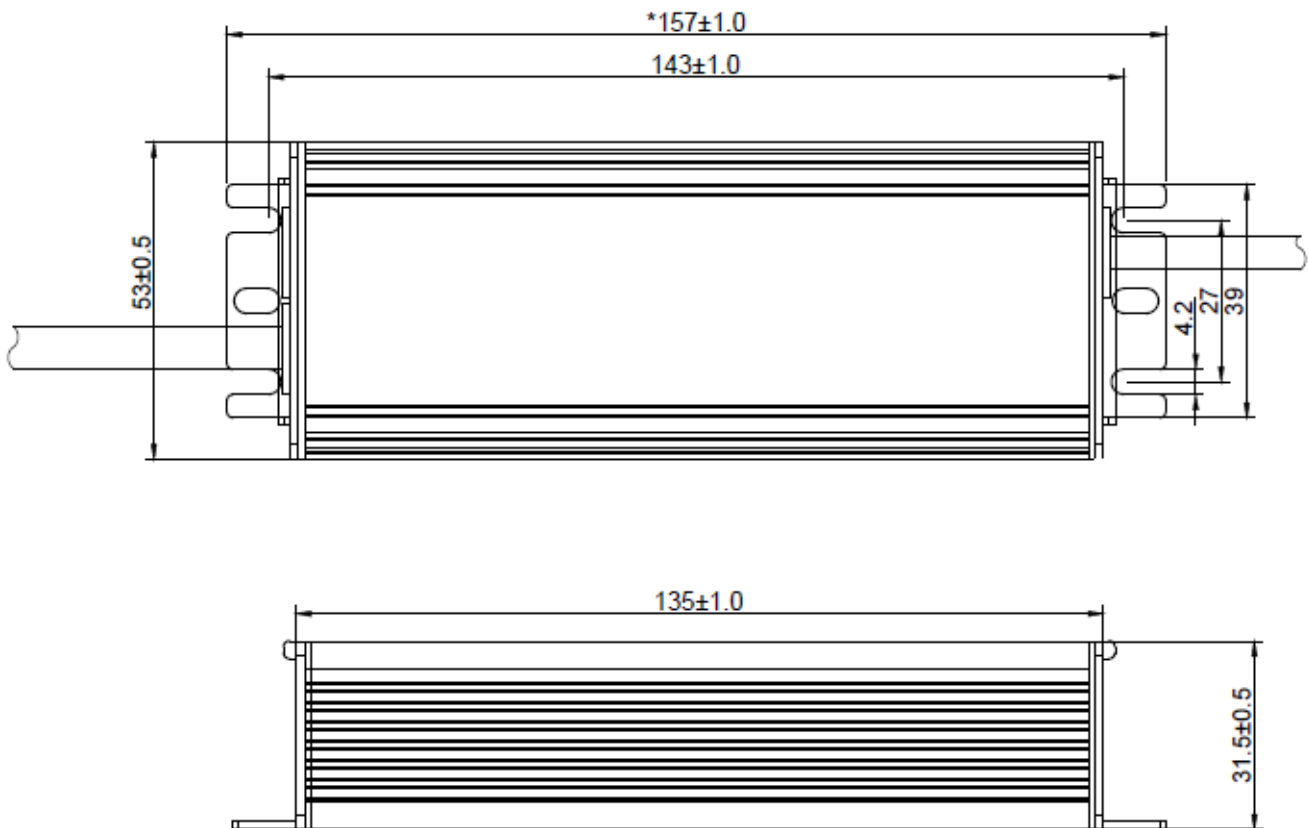
	Item	Value	Unit	Remarks
Input	Nominal voltage	220 - 240	V	
	Mains frequency	50 / 60	Hz	
	Input voltage AC	198 - 264	V	
	Nominal current	0.36	A	Full load, 230 V _{AC} , 50 Hz / 60 Hz
	Total Harmonic Distortion (THD)	< 5	%	Full load, 230 V _{AC} , 50 Hz / 60 Hz
	Power factor λ	0,95		Typical, Full load, 230 V _{AC} , 50 Hz / 60 Hz
	ECG Efficiency	87	%	Typical, Full load, 230 V _{AC} , 50 Hz
	Power loss in no load condition			Not applicable
	Protection class	I		
	Suitable for fixtures with prot. Class	I / II		
	Inrush current	45	A	At Full Load ,240 V _{AC} , Cold Start Duration=250 μ s 50%Ipk—50%Ipk
	Max. ECG no. on circuit breaker 10 A (B)	6		
	Max. ECG no. on circuit breaker 16 A (B)	13		
	Max. ECG no. on circuit breaker 25 A (B)	22		
	Max. ECG no. on circuit breaker 10 A (C)	14		
Max. ECG no. on circuit breaker 16 A (C)	23			
Max. ECG no. on circuit breaker 25 A (C)	36			
Output	Nominal output voltage	12,5	V	
	Voltage accuracy	+/- 3	%	
	Voltage ripple	< 3	%	Vpk-pk at 100 Hz; Full load
	Nominal output power	60	W	
	Device power loss	8.6	W	
	Maximum power	60	W	
	Capacitive load	20	μ F/A	Linear modules allowed
	Galvanic isolation	SELV		
	U-OUT (working voltage)	13	V	
Environmental	Ambient temperature range	-40...+50	°C	At full load, t_c not exceeded
		+50...+70		Load derating, t_c not exceeded Refer to derating curve
	Max. temperature at t_c test point	80	°C	Measured on t_c point indicated of the prod label, t_a not exceeded
	Storage temperature range	-40...+85	°C	
	Permitted rel. humidity during operation	5 ... 85	%	Not condensing
	Surge capability (L/N)	6	kV	L/N acc to. EN 61547
	Surge capability (L-N/PE)	6	kV	L-N/PE acc to. EN 61547
	Environmental rating	Outdoor		
	IP protection class	IP 66 / IP 67		
	Mains switching cycles	> 100'000	cycles	At $t_a = 25^\circ\text{C}$
	Expected ECG lifetime	50'000	h	$t_c = 80^\circ\text{C} - 0,2\% / 1'000 \text{ h}$ failure rate
	No-load proof	Yes		
	Overheating protection	Yes		Auto recovery
Overload protection	Yes		Auto recovery	
Short-circuit protection	Yes		Auto recovery	
Dimension	Height	31.5	mm	
	Length	157	mm	Includes mounting hangers
	Width	53	mm	
	Casing material	Metal		
	Mounting hole spacing, length	143	mm	
	Net weight	473	g	

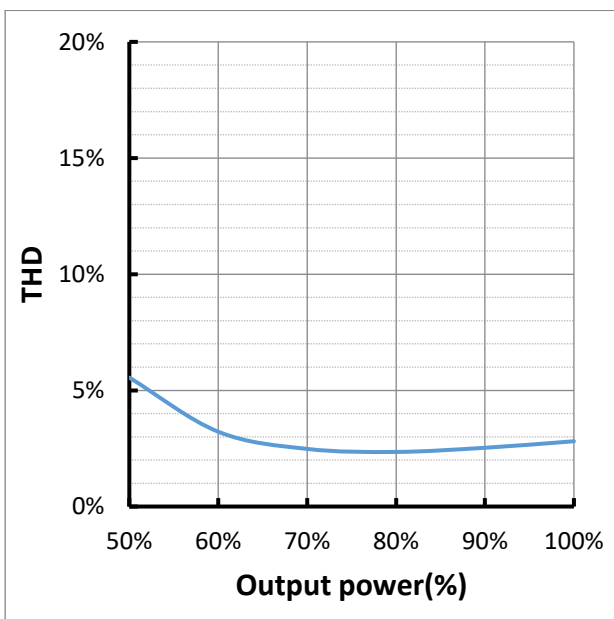
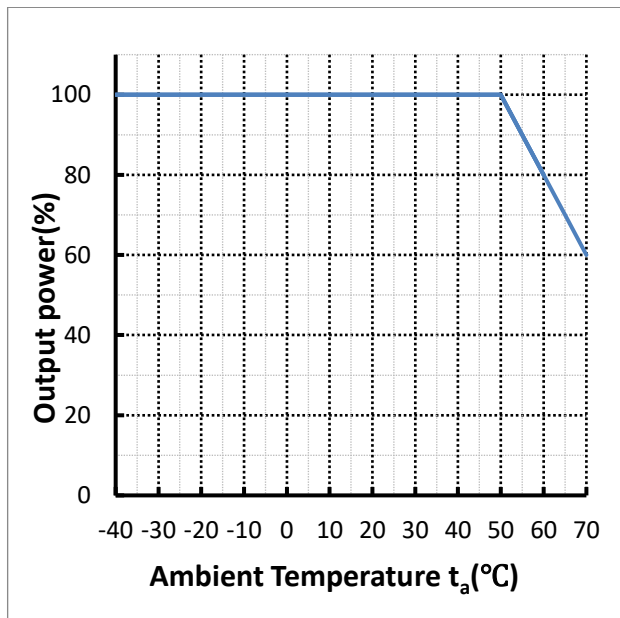
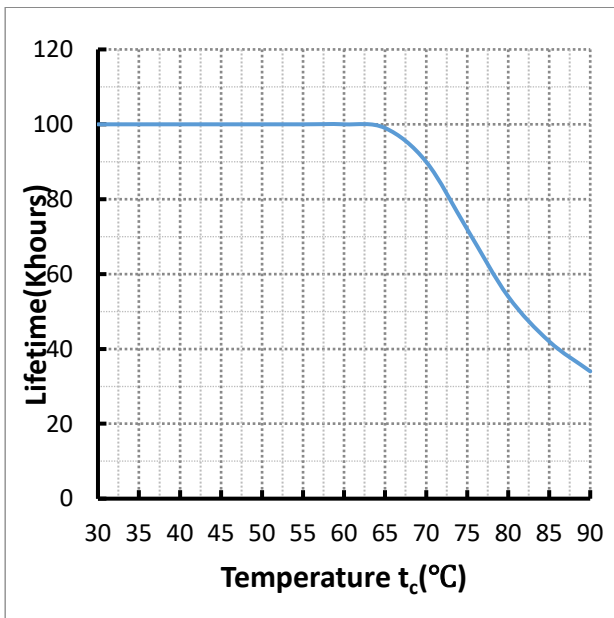
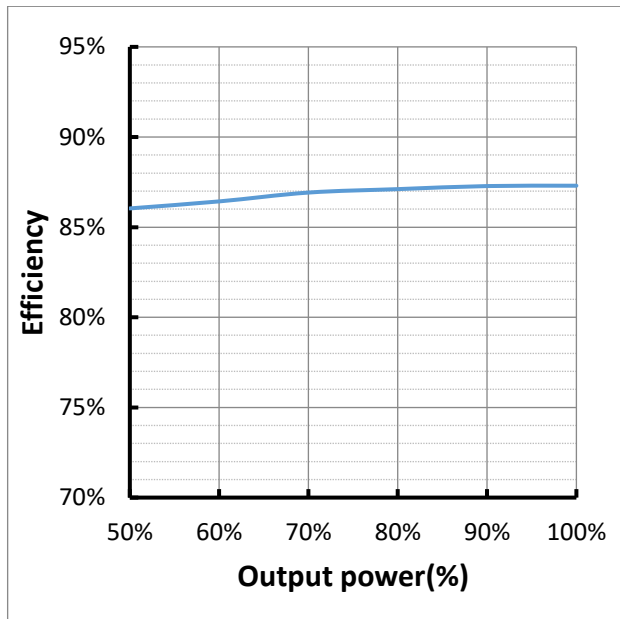
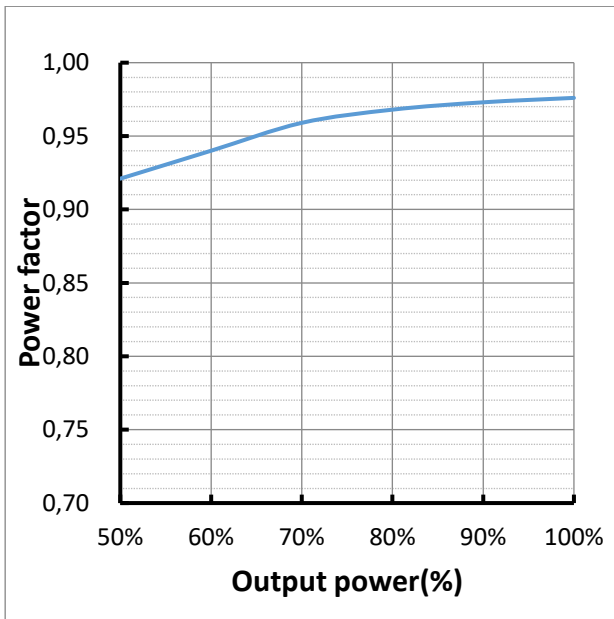
Input	Colour L / N / GND	Blue / Brown/ Yellow and Green		
	Cable cross selection	1,0	mm ²	H05RN-F/3x1.0 mm ²
	Wire preparation length	60	mm	
	Wire peeling length	10	mm	
Output	Lead length	300	mm	
	Colour + and -	Red / Black		
	Cable cross selection	1,0	mm ²	H05RN-F/2x1.0 mm ²
	Wire preparation length	60	mm	
	Wire peeling length	10	mm	
	Lead length	300	mm	

Protection

Over temperature, Overload, Short-circuit, open-circuit, Reversible.

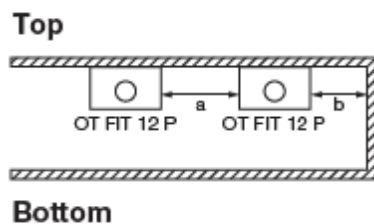
Dimension:





Remarks

- **Output short circuit protection:** auto reversible when fault removed.
- **Output overload protection:** auto reversible when fault removed.
- **Over temperature protection:** the unit is protected against temporary overheating by shutting the unit down, auto reversible when temperature decreases. Temperature on t_c point must not exceed t_c max. Derating for LED load is necessary if t_a is higher than 50°C.
- **No load operation:** please take care to switch off the driver via L. Hot plug-in or secondary switching of LEDs is not permitted.
- **Waterproof:** the driver is designed for outdoor installation with IP66 / IP67 protection grade. Input and output cables must be connected by means of a sealed cable clamp.
- **LED wire length:** 10 m EMI verified. Max cable length of 10 m recommended.
EMI may be interfered by on site installation condition with longer cable. For longer cable (> 10 m), cable with larger cross section area is needed to cover voltage drop.
- **Exit cables:** the supplied, internally wired cables cannot be replaced; if the cord is damaged, the LED driver must be replaced.
- Keep enough distance from the ceiling corner or other drivers to avoid overheat. The driver must not be covered by flammable materials. At critical conditions showed by below picture (full load, $t_a = 50^\circ\text{C}$, driver on the corner of ceiling), refer to below distances. At normal installation, distance can be shorter but temperature at t_c point must be within t_c max.



a: $\geq 1\text{cm}$; b: $\geq 1\text{cm}$

- For detailed application notes, please refer to user instructions.

Standards

EN 61347-1
 EN 61347-2-13
 EN 55015
 EN 61547
 EN 61000-3-2
 EN 61000-3-3
 EN 60598-1
 EN 62384

Ordering information

Product name	EAN 10	EAN 40	Pieces / Box
OT FIT 60/220-240/12 P	4062172133487	4062172133494	15

OSRAM GmbH

Head Office:

Marcel-Breuer-Strasse 6
 80807 Munich, Germany
 Phone +49 89 6213-0
 www.osram.com